

## S2 Homework 30

**No calculator allowed!!**

- 1)  $5040 \div 70$       2)  $2898 \div 60$       3)  $3705 \div 500$       4)  $6096 \div 8000$

**Revision of S1 work**

5) Write these times in the 24-hour clock: -

- a) 6:20am      b) 6:20pm      c) 12:15pm      d) 12:15am

6) Write these times in the 12-hour clock: -

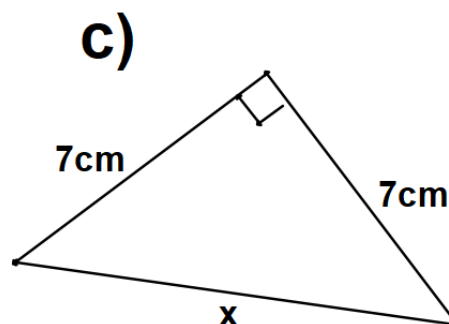
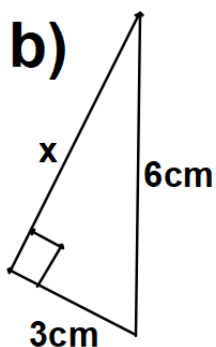
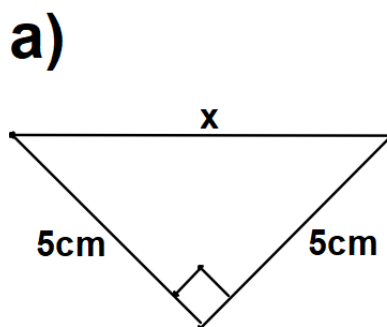
- a) 0222      b) 1333      c) 2359      d) 0001

7) How long from: -

- a) 6:20am to 10:35am      b) 1129 to 1753  
c) 3:43pm to 7:25pm      d) 1448 to 1723

**S2 work**

8) Calculate the length of the sides marked **x** in the right-angled triangles below. Round your answers to one decimal place.



9) This stem and leaf diagram shows the length of worms in a sample.

### Length of worms

1	1 6 6 6
2	1 3
3	
4	4 5 6
5	2 4 4 6 8
6	9
7	2

$n = 19$      $4 \mid 5$  means 4.5cm long

- How many worms were there in the sample?
- What length was the longest worm?
- Three worms were the same length. Which length was this?

### UK Junior Maths Challenge Question

If you work out the values of the following expressions and then place them in increasing numerical order, which comes in the middle?

A  $\frac{2}{3} + \frac{4}{5}$

B  $\frac{2}{3} \times \frac{4}{5}$

C  $\frac{3}{2} + \frac{5}{4}$

D  $\frac{2}{3} \div \frac{4}{5}$

E  $\frac{3}{2} \times \frac{5}{4}$